

Interagency Arctic Research Policy Committee Arctic Research Plan 2017-2021

WHAT IS THE ARCTIC RESEARCH PLAN?

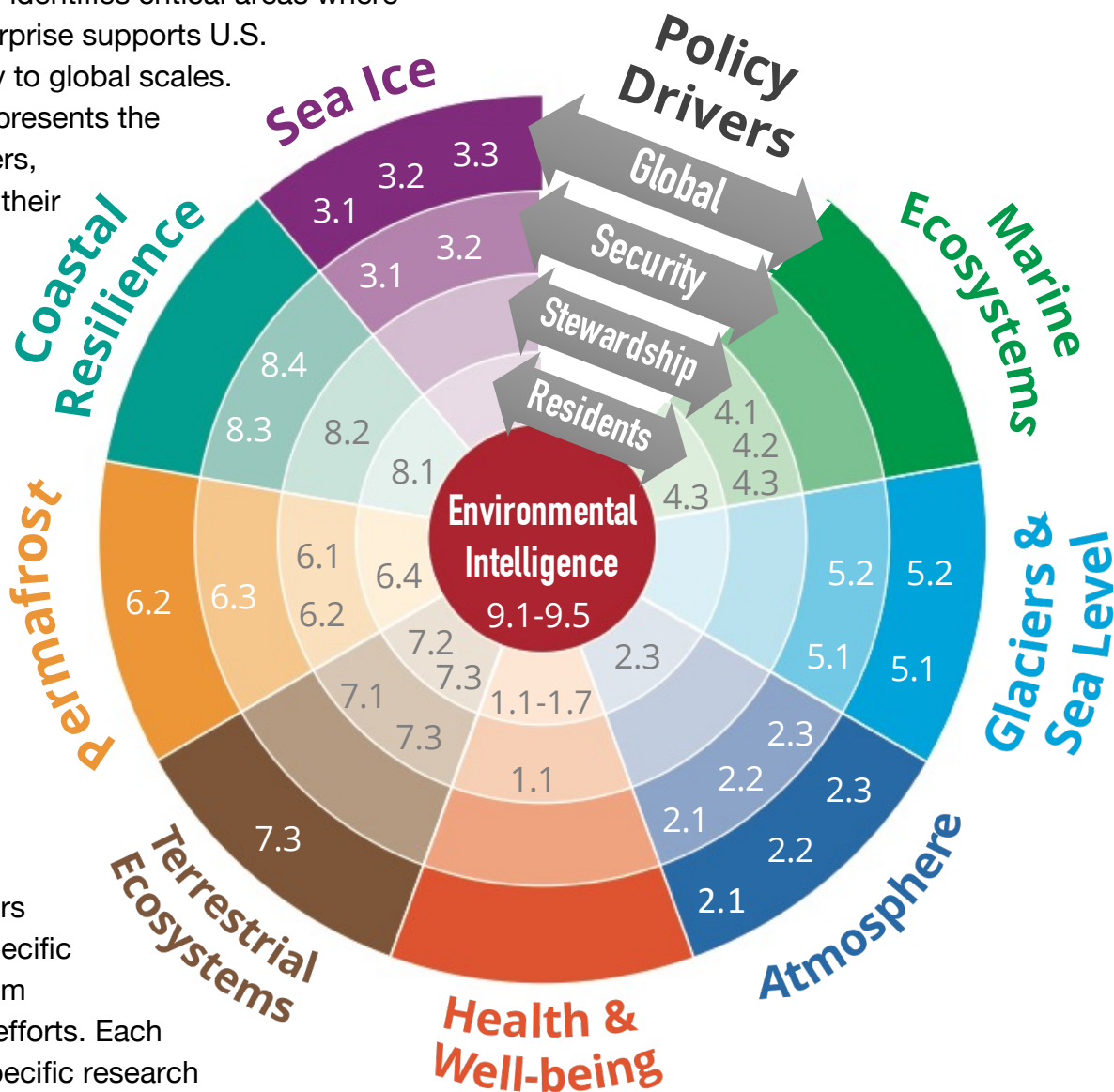
The Interagency Arctic Research Policy Committee (IARPC) is required to develop and implement a five-year research plan in consultation with the U.S. Arctic Research Commission, the Governor of the State of Alaska, residents of the Arctic, the private sector, and public interest groups¹. The Plan intentionally builds on the strong intellectual accomplishments and ideas of the research community at the Federal, State, local, and tribal levels as well as inclusion of ideas from the academic community, non-governmental organizations, the private sector, and overseas entities.

WHAT IS IN THE ARCTIC RESEARCH PLAN 2017-2021?

This policy-driven plan identifies critical areas where the U.S. research enterprise supports U.S. policy from community to global scales.

This wheel diagram represents the Plan's four policy drivers, shown as arrows, and their intersection with nine research goals: broad topics where an interagency approach can accelerate progress. Eight goals are shown as wedges, and environmental intelligence, with its emphasis on system integration and tools for decision support, ties all wedges together at the center.

Research objectives, represented as numbers on the diagram, are specific actions that benefit from coordinated research efforts. Each is associated with a specific research goal but may be closely related to activities under other research goals and support the policy drivers at multiple scales.



WHAT IS NEW IN THIS PLAN?

In recognition of the broader factors that contribute to health and community vitality, this plan has developed a stronger focus on the health and well-being of northern residents. The plan also emphasizes the role that northern residents play in the co-production of scientific knowledge.

With a new goal focused on “Permafrost,” IARPC brings together basic geophysical research with adaptation research, and improves the treatment of permafrost processes in predictive models. The “Coastal” topic is new to this plan and draws together a rich array of existing activities into a more coordinated effort.

The concept of “Environmental Intelligence” is also a new addition to the Plan, but draws on some familiar territory: observations, models and data management. The Environmental Intelligence framework will identify areas where an interagency focus on these topics can strengthen the role of research in decision support.



HOW WILL THE PLAN BE IMPLEMENTED?

IARPC Collaborations is the structure created for implementing the Plan. IARPC Collaborations is open to anyone who can contribute to implementation. This open collaboration (utilized to implement the previous Plan) has generated an unprecedented degree of interagency cooperation and collaboration and strong partnerships with individuals and organizations outside the Federal government. Scientists from Federal agencies, the State of Alaska, the academic community, NGOs, and private sector organizations are sharing their experience and expertise, and working together to solve hard problems and accelerate the pace of Arctic research.

HOW CAN I CONTRIBUTE?



Request an account at www.iarpccollaborations.org, connect to other researchers and stakeholders, and help accelerate the pace of Arctic research.

1. *Arctic Research and Policy Act of 1984 (ARPA)*, Public Law 98-373, July 31, 1984, as amended by Public Law 101-609, November 16, 1990